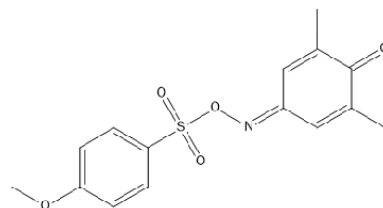


## L002

**Catalog Number:** EI-2769

**CAS Number:** 321695-57-2

**Price:** [Online Inquiry](#)



| Catalog Number | Price                          |
|----------------|--------------------------------|
| EI-2769        | <a href="#">Online Inquiry</a> |

| Product Information |  |
|---------------------|--|
| Molecular Formula   | C <sub>15</sub> H <sub>15</sub> NO <sub>5</sub> S  |
| Molecular Weight    | 321.35   |
| Purity              | ≥98%   |
| SMILES              | CC1=CC(=NOS(=O)(=O)C2=CC=C(C=C2)OC)C=C(C1=O)C  |
| InChi               | InChI=1S/C15H15NO5S/c1-10-8-12(9-11(2)15(10)17)16-21-22(18,19)14-6-4-13(20-3)5-7-14/h4-9H,1-3H3  |
| InChi Key           | VEWFTYOFWIXCIO-UHFFFAOYSA-N  |
| Alternate Name      | [(3,5-dimethyl-4-oxocyclohexa-2,5-dien-1-ylidene)amino] 4-methoxybenzenesulfonate; 4-(4-methoxyphenylsulfonyloxyimino)-2,6-dimethylcyclohexa-2,5-dienone; (3,5-dimethyl-4-oxocyclohexa-2,5-dien-1-ylidene)amino 4-methoxybenzene-1-sulfonate; (3,5-dimethyl-4-oxocyclohexa-2,5-dienylidene)azamethyl 4-methoxybenzenesulfonate; 2,6-dimethyl-2,5-cyclohexadiene-1,4-dione 4-[O-[(4-methoxyphenyl)sulfonyl]oxime]; NSC764414; p300/CBP Inhibitor VI |
| Appearance          | A crystalline solid  |

| Properties          |   |
|---------------------|---|
| Storage Conditions  | -20°C   |
| Shipping Conditions | RT  |
| Solubility          | ~1 mg/ml in Ethanol ~30 mg/ml in DMSO and DMF |