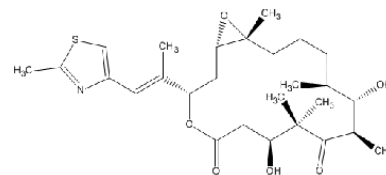


## Epothilone B

**Catalog Number:** BC-0565

**CAS Number:** 152044-54-7

**Price:** [Online Inquiry](#)



| Catalog Number | Price                          |
|----------------|--------------------------------|
| BC-0565        | <a href="#">Online Inquiry</a> |

| Product Information |  |
|---------------------|--|
| Molecular Formula   | C <sub>27</sub> H <sub>41</sub> NO <sub>6</sub> S  |
| Molecular Weight    | 507.68   |
| Purity              | ≥98% by HPLC   |
| SMILES              | CC1CCCC2(C(O2)CC(OC(=O)CC(C(C(=O)C(C1O)C)(C)C)O)C(=CC3=CSC(=N3)C)C)C   |
| InChi               | InChI=1S/C27H41NO6S/c1-15-9-8-10-27(7)22(34-27)12-20(16(2)11-19-14-35-18(4)28-19)33-23(30)13-21(29)26(5,6)25(32)17(3)24(15)31/h11,14-15,17,20-22,24,29,31H,8-10,12-13H2,1-7H3/b16-11+/t15-,17+,20-,21-,22-,24-,27+/m0/s1 |
| InChi Key           | QXRSDHAAWVKZLJ-PVYNADRNSA-N  |
| Alternate Name      | EPO-906; EpoB; Patupilone  |
| Appearance          | White to off-white solid   |

| Properties          |                                    |
|---------------------|------------------------------------|
| Storage Conditions  | -20°C                              |
| Shipping Conditions | Gel Pack                           |
| Solubility          | DMSO (40 mg/ml) or EtOH (40 mg/ml) |